

## Diaper Pattern Instructions

### Required materials:

¼ yd. suede cloth, velour, or other inner fabric (referred to as “fabric” on the pattern)

¼ yd. PUL or outer fabric (referred to as “PUL” on the pattern)

½ yd. ¼” lastin or other elastic

16 sockets (snaps)

8 studs (snaps)

OR

8” 1.5” loop

3” 1.5” hook (cut in 2 squares for the tabs)

Thread (100% polyester)

1 small strip of fabric for snap facing (about 3” wide and long enough to fit the front of the diaper)

### Directions:

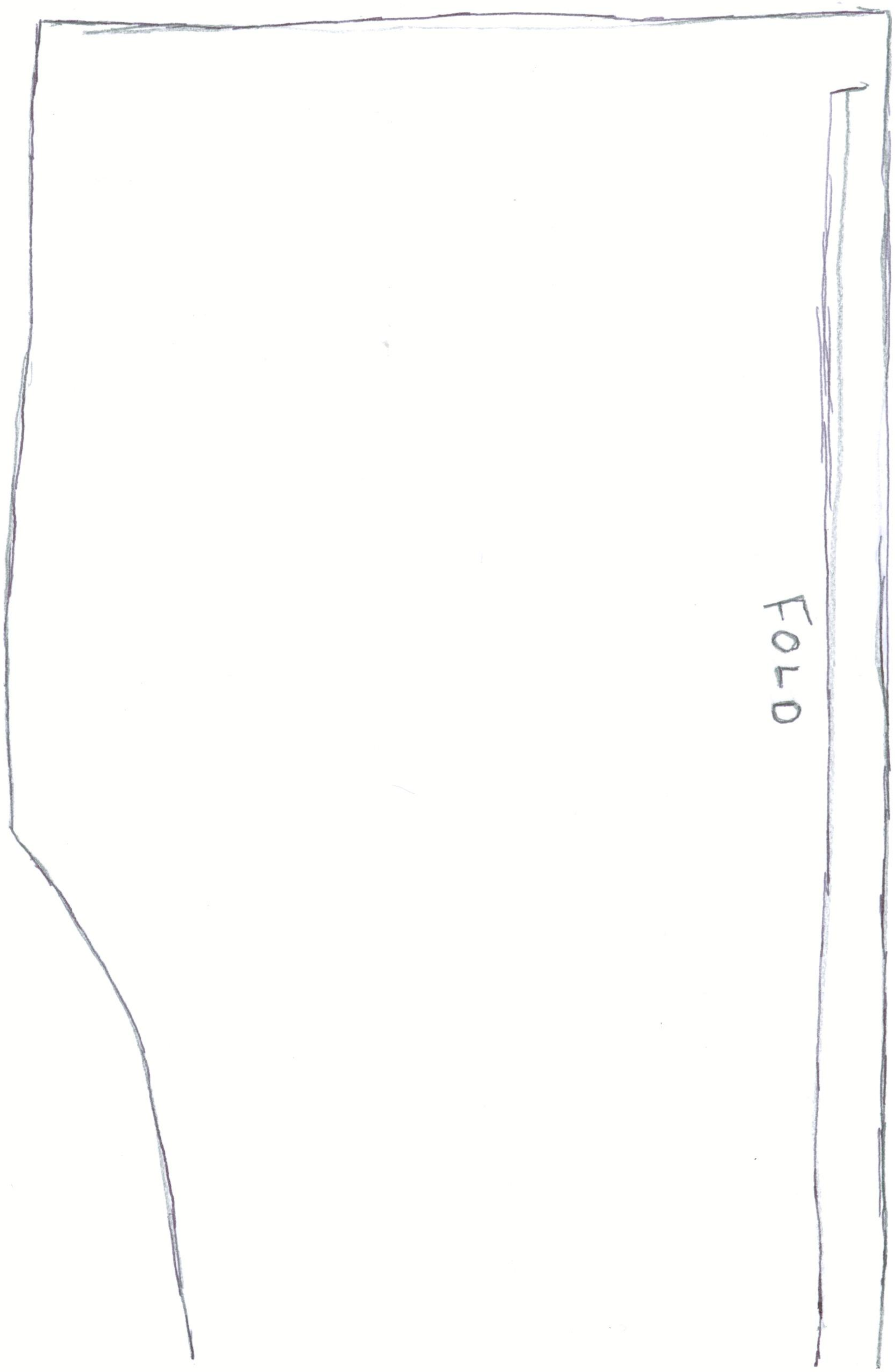
- 1) First, print all the pattern pieces and tape together pages 1 and 2; and pages 3 and 4 as directed on the pattern.
- 2) Cut out the pieces of the pattern.
- 3) Fold the fabric and pin the pieces to the fabric, taking note of where the fold should be.
- 4) Cut out all the pieces.
- 5) Use a fabric pen to transfer the snap markings to the PUL, making sure to transfer the marks on BOTH sides of the folded PUL. The first row of snaps should start 1.5” below the top, and should be 1” apart on all sides.
- 6) Cut a strip of fabric as described in the materials section, and pin it to the wrong side of the PUL. Sew it in place as close to the edge as possible, around the front of the diaper. This seam should not show later.
- 7) Place the 16 sockets on the right side of the PUL, following the markings. Use a snap press to secure them completely. Alternately, sew 8” of loop to the front of the diaper approximately along the snap placement.
- 8) Set aside the PUL. Hem the bottom edge of the sham piece about ¼”, and hem the top of the inner piece ¼”.
- 9) Get all pieces and lay them out carefully. You will pin them all together now, right sides together.

- 10) Lay the PUL face up. Lay the inner face down on top of it, matching the bottom edges. Pin or otherwise secure (possibly using a glue stick) the bottom and sides together.
- 11) Lay the sham on top of the PUL, matching the top edge. Pin or secure in place.
- 12) Lay the tabs on either side of the diaper, with the folded edge facing away from the body of the diaper. Open the tab and match the right sides of the tab with both the edges of the sham and the inner. The edges of the tab should match the top of the sham and the bottom of the inner. The sham and the inner will overlap in the middle. Pin in place. Then, match the PUL and tab and pin. Repeat on the other side.
- 13) Sew along the edges where the tabs meet the body of the diaper, being careful not to sew the tabs closed. Do this by isolating the tab on each side and sewing down each seam. There should be 4.
- 14) When the tabs are sewn to the body, sew all around the outside of the diaper. Trim the edges slightly so they are  $\frac{1}{4}$ " all the way around.
- 15) Put in the elastic. Don't cut the elastic until you are finished, simply select a very long piece. Place the end of the elastic at the top of the diaper, where the tab meets the body (on the body). It should be very close to the edge, on the seam. Use a straight stitch forward and backward to secure the first  $\frac{1}{2}$ " of the elastic in place. Then, switch to a zig zag stitch (fairly wide) and, pulling the elastic taut, stitch along the length of the diaper until where the body meets the other tab. Backstitch at the end, then cut off the thread and elastic. The diaper should be gathered.
- 16) Repeat the same procedure with the elastic on the sides. Begin where the edge of the tab meets the body, and end where the facing begins (about 3" from the bottom of the diaper). If the facing piece isn't even, fold the diaper in half and mark the beginning and ending of the elastic on both sides so they are even.
- 17) When all the elastic is in, turn the diaper right side out by the sham opening.
- 18) Optional: Topstitch all the way around the diaper. Begin at the top of the diaper, and sew about  $\frac{1}{4}$ " from the edge when near the elastic, and as close to the edge as possible otherwise. I prefer the diaper this way, I think it looks neater and fits better, but not everyone likes it.
- 19) Finally, mark 4 snaps on each wing in a 1" square. I forgot to put this on the pattern, but snaps should be 1" all the way around.
- 20) Wash your new diaper, then stuff with whatever you want. Microfiber cloths and prefolds work well!

If you are having trouble visualizing any of this, please look at my blog for a tutorial: <http://domesticadventures2tday.blogspot.com/> The style of the diaper is a little different, but much of the procedure is the same (no sham opening though). Please feel free to email me if you need any help with this pattern or directions!

Pg. 1 medium

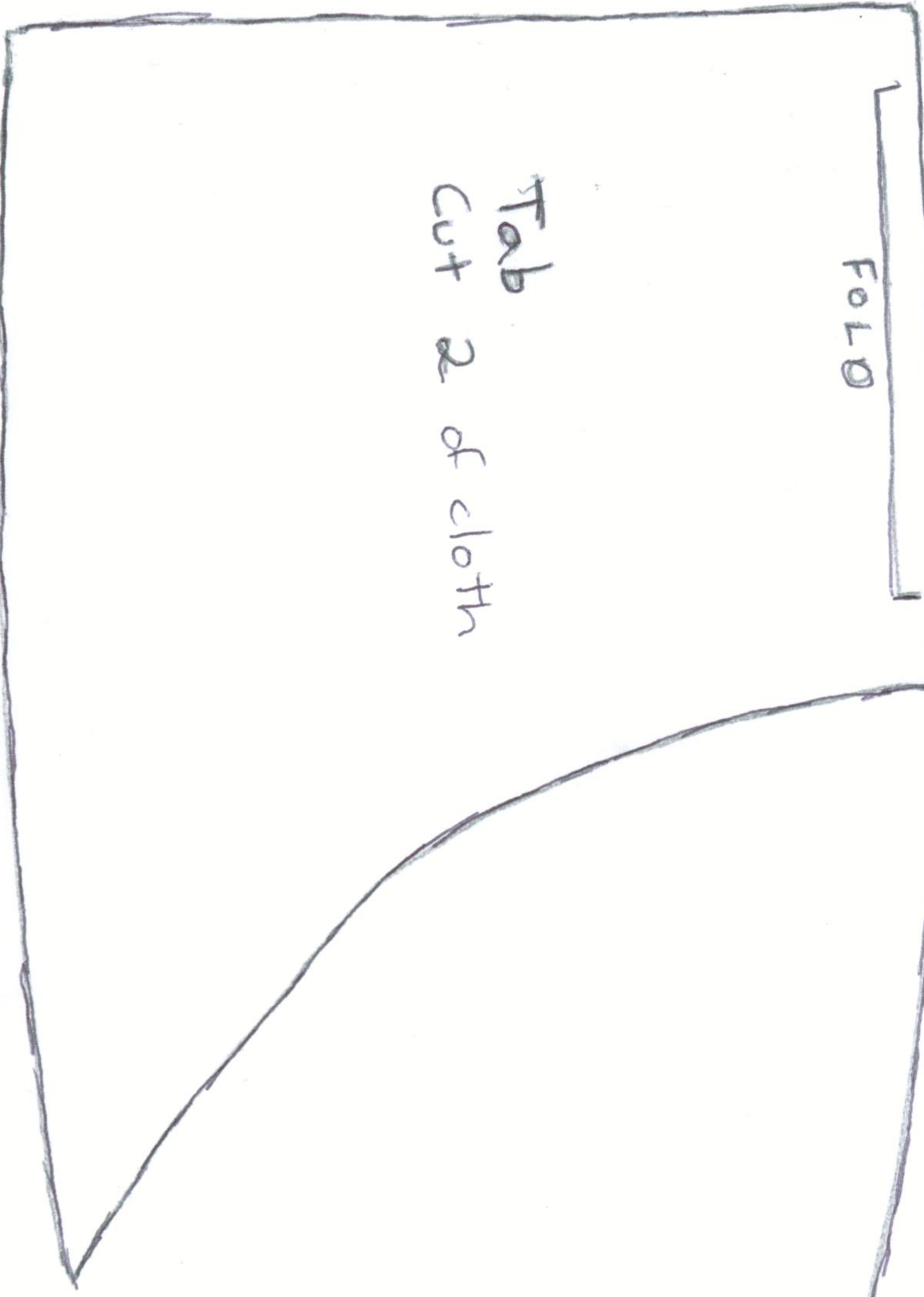
Fits 15 - 30 lbs.



FOLD

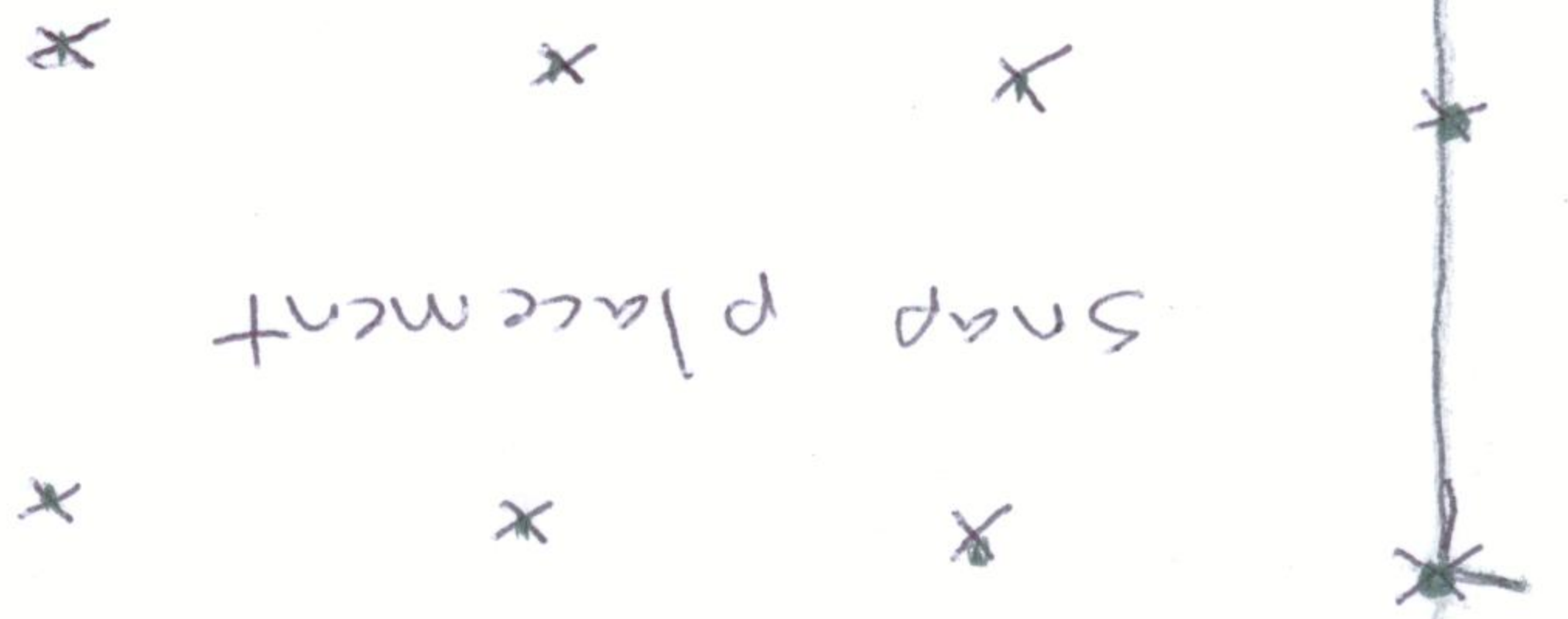
Match pgs. 1 + 2  
Tape together

Pg. 2 med.



FOLD

Outer  
Cut 1 of PUL



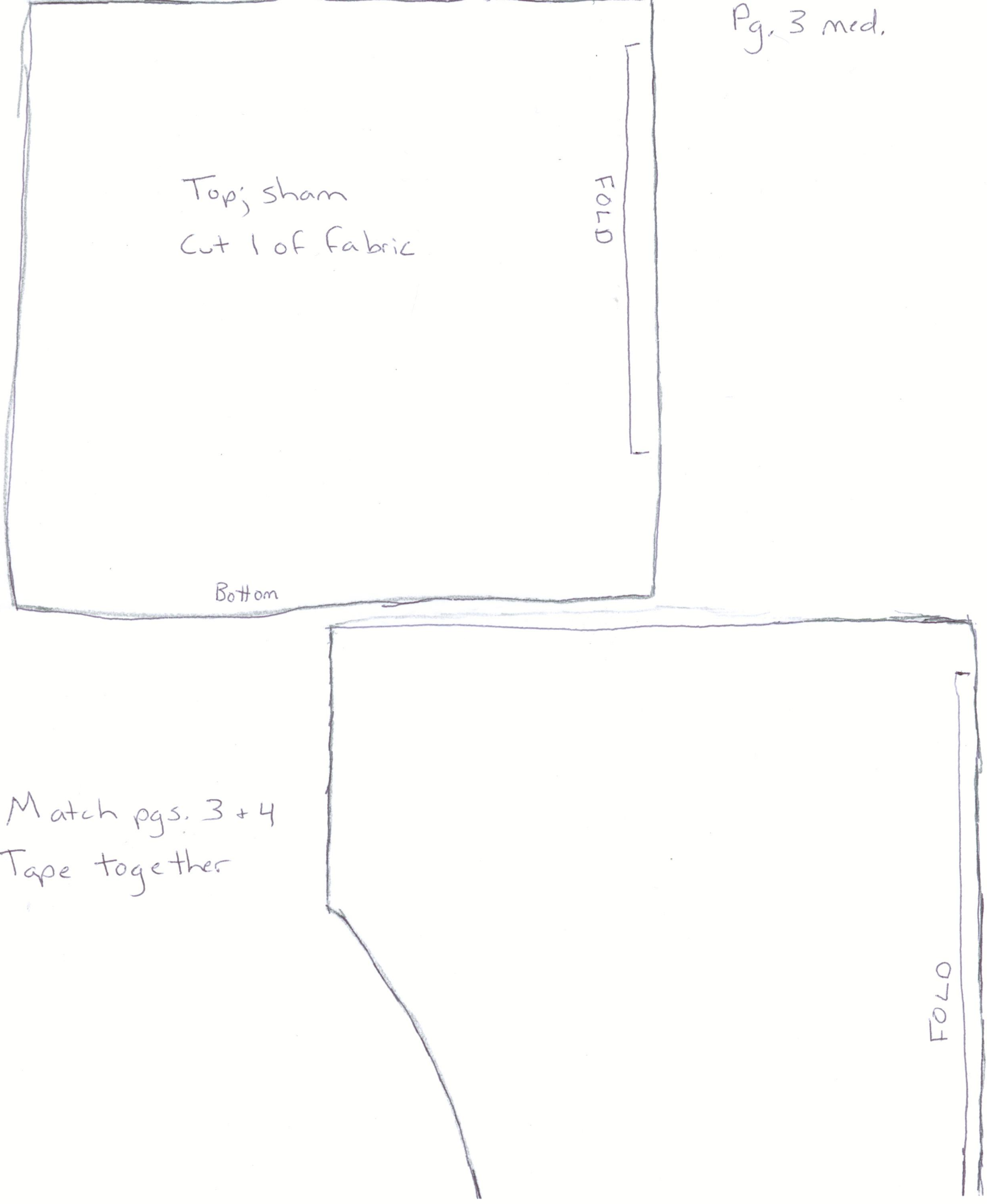
Top; sham  
Cut 1 of fabric

FOLD

Bottom

Match pgs. 3 + 4  
Tape together

FOLD



Pg. 4 med.

Inner  
Cut 1 of fabric

FOLD

